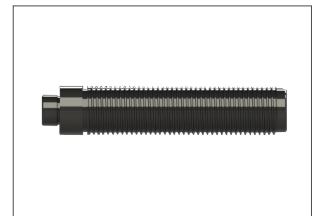


GC-6605

Semi-automatic | with PPE foam plastic top cover



φ40 strong and precise main axle



Balance block can be split

Standard parts



Full Equipment



Rear ruler | to be full automatic

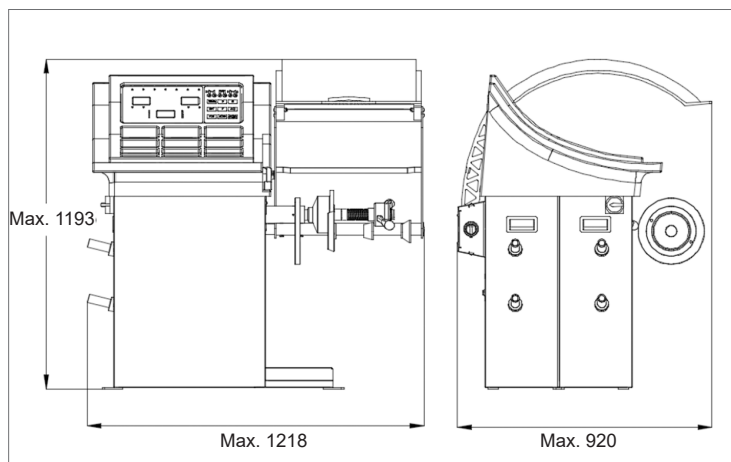
Included:

Box of 100 strips of Fe Adhesive Wheel Weights
5g + 10g * 4 Strips

WW Package

Features:

- 1 Special four modes, ALU-S universal aluminum alloy wheel rim internal paste mode, tyre optimization;
- 2 Balance block split pattern-aluminum alloy wheel rim with lead block is easy to damage the rim appearance;
- 3 The measuring ruler is equipped with a blanced block mounting head to make it easy to paste the balance block;
- 4 The automatic measuring tape measure adopts the imported positioner, withc can accurately measure the width of the tyre distance;
- 5 High precision machinery spindle ensures measurement accuracy;
- 6 Equipped with a fine tyre cover that automatically opens the balance machine;
- 7 Can be transfered between inch, mm, and gram;
- 8 With the function of self-calibration and self-diagnosis for faults;
- 9 Optional to choose large cone plate, cone for light truck or the tyres with large holes;



Technical data	
Max. wheel weight	65kg
Max. wheel diameter	47"
Rim diameter	10"-24"
Rim width	1.5"-20"
Balancing speed	200rpm
Balancing accuracy	1g
Power supply	240V/1PH/3PH 50/60Hz
Measuring time	6~8S
Noisy level	≤65db
Net Wight	105kg
Gross weight	140kg
Packing dimension	970×770×1170mm